

## Guide Star Engineering (GSE)

High-technology Engineering Services specializing in hardware and software engineering design, research & development, systems testing, and systems integration in diversified industrial and government markets. We support clients in Construction, Industrial Automation, Defense/Aerospace, Information/Communication Technology and Ocean Engineering with engineering services that include management, design, development, prototyping and production.

## Our Company

Guide Star Engineering, LLC (GSE), Est. 2006, is a service-disabled, veteran-owned (SDVOSB), specializing in systems engineering, hardware integration, multi-physics-based modeling, and simulation and testing. GSE provides subject matter expertise on infrasonics, acoustics, underwater sensor technology, high performance computer (HPC) programming

## Core Competencies

- Acoustics and Infrasound
- Signal Processing
- Prototyping
- High Performance Scientific Programming
- Field Testing
- R&D

## Market /Customers

**Battelle**  **L3HARRIS™** **SAIC**

 **TELEDYNE DALSA**  
Everywhere you look™

**LOCKHEED MARTIN** 

 **Sandia**  
**National**  
**Laboratories**

**NAVWAR** 

**Ultra**  
**ELECTRONICS**

 **Space Coast**  
FLORIDA

## Monitoring, Environment, Performance

Sensors and tools are one of our specialties.

**Guide Star**   
**Engineering, LLC**

## Contact Us

Address: PO BX 700697, Kapolei, HI 96709

Phone: (808) 497-0144

Email: [techinfo@gsellc.com](mailto:techinfo@gsellc.com)

Website: <https://www.gsellc.com>

Other locations: California, Indiana, Texas, Space Coast Florida, Maryland, and Pennsylvania

**Guide Star**   
**Engineering, LLC**  
NAVIGATION TO A BRIGHTER FUTURE



**Land, Air, & Sea We offer diverse solutions to a wide range of environments in our projects.**



## Our Projects

GSE provides scientific research & development, communications systems design, data acquisition systems, signal processing and analysis, field testing, computer networking, electronic design, mechanical design, prototype fabrication, manufacturing, and shipyard/ waterfront support.

## Our Services

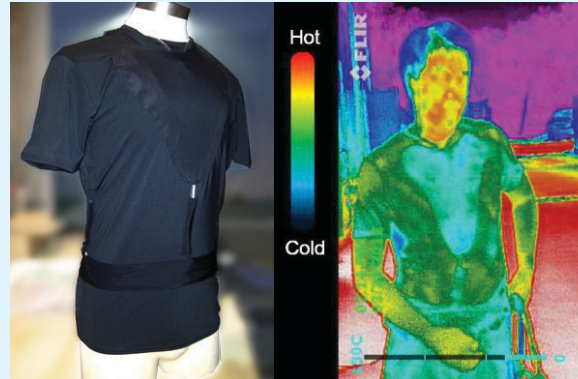
- Electrical Engineering
- Physical Sciences
- Marine Engineering
- Remote Sensing
- Acoustics
- Communications
- Environmental Science

## Body-worn Cameras (BWC) Technology



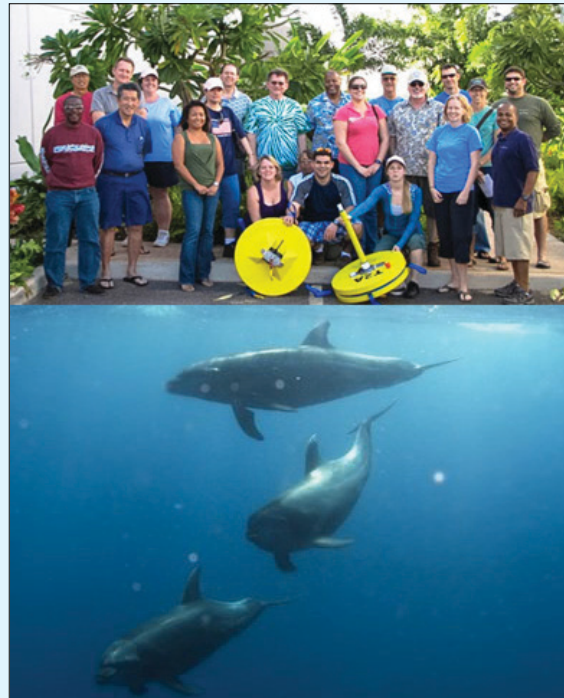
Exploring point of view (POV) perspective for various applications. Including single wearer multi-camera systems that process and display a complex scene in 3D by stitching together the images from two or more cameras in near-real time.

## Kool-Tee



Kool-Tee technology. Keeps workers cool on the job in hot and confined spaces at safe and comfortable levels.

## TABS



Trigger and Alert Buoy System (TABS) monitors the unique sounds made by marine mammals in the open ocean environment.

## GSE Infrasond Sensor



Image captured on GSE infrasond sensor as it ascends to operational altitude in the stratosphere

## Remote Image Capture and Monitoring Systems



We are teaming with Siemens Vision and FLIR cameras to integrate low power commercial off-the-shelf technology to transmit high definition video from remote sites to image processing computer workstation.