

## MISSION

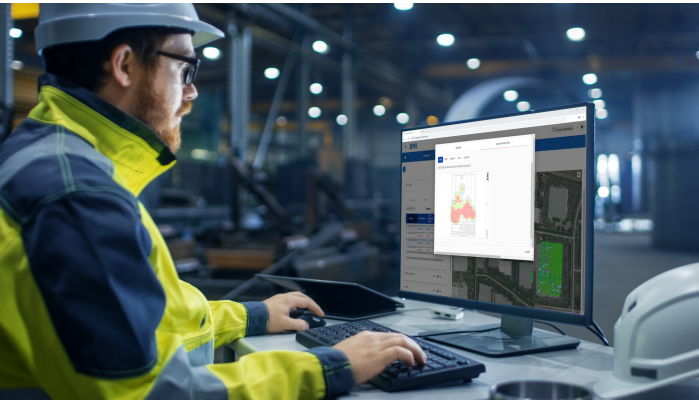
---

Design Mill, Inc. works to create efficiencies through innovation by integrating emerging technology applications into business processes.

## CONTACT INFO

---

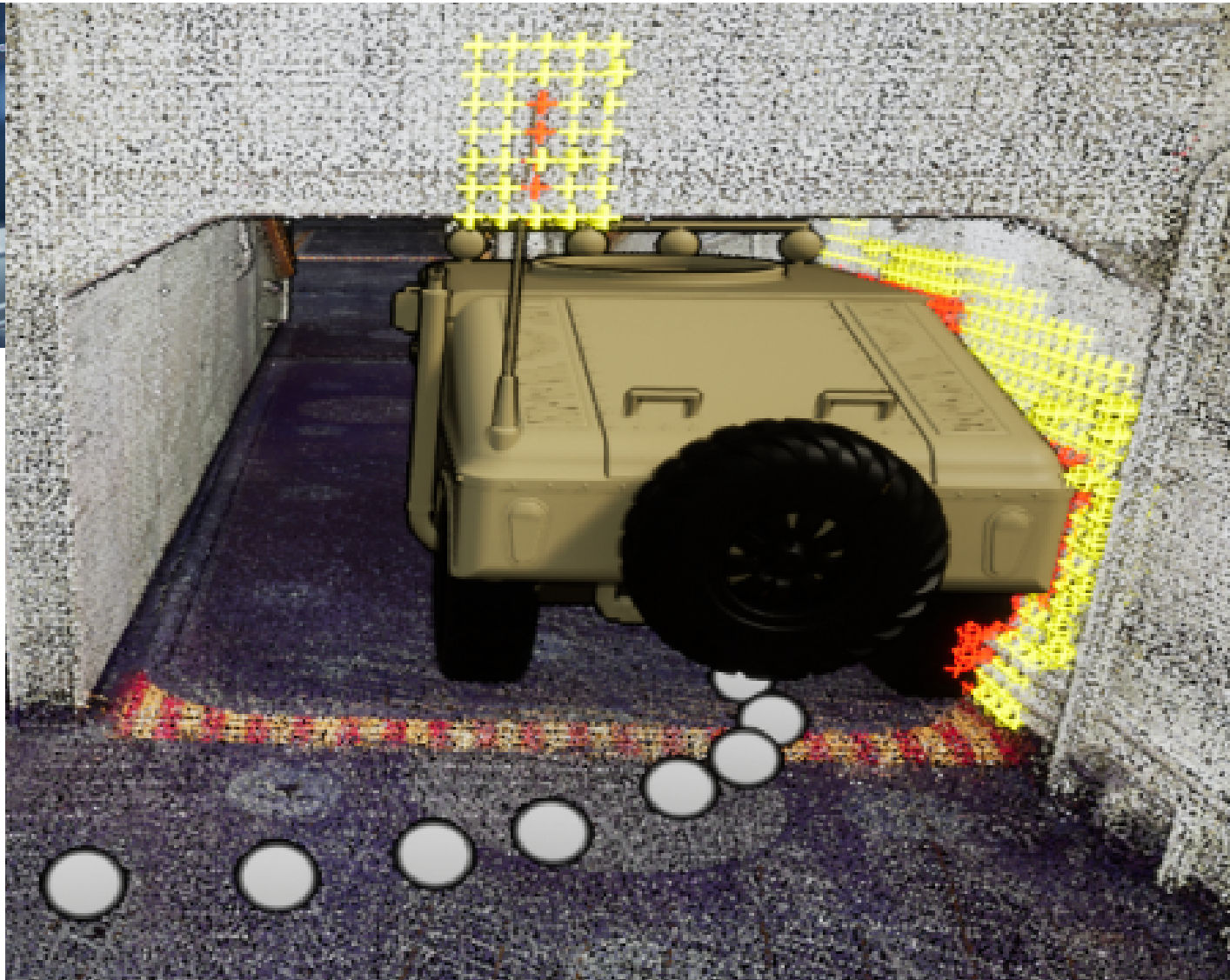
850 White Street  
Dubuque, IA 52001  
[www.designmillinc.com](http://www.designmillinc.com)  
[info@designmillinc.com](mailto:info@designmillinc.com)  
563.587.8778



## MARKETS/CUSTOMERS

---

- Ship Loading & Transportability
- Industrial Warehousing
- Electrical Utilities
- Building Technologies
- Logistics
- Aviation
- Rail
- Factory Planning
- Port Operations
- Law Enforcement & Public Safety (Forensics)





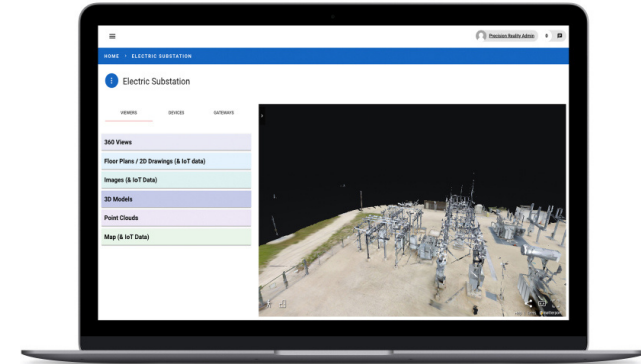
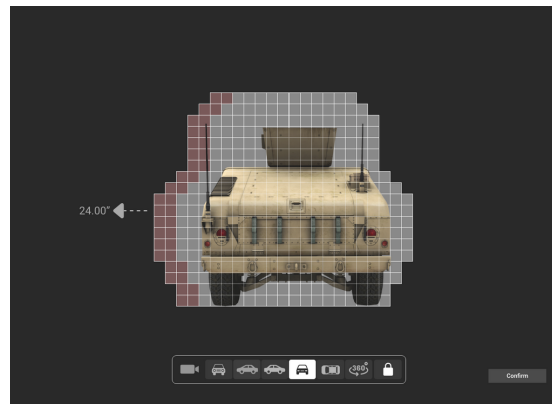
## ABOUT DESIGN MILL

- Design Mill, Inc. is a strategic systems integrator delivering emerging technology solutions for the Department of Defense and industry-leading organizations.
- Defense Contractor Since 2004
- Experience building and bringing to market cutting-edge interactive hardware and software with innovative design, development, and processes.
- Core Competencies in Laser Scanning, Software Development, Virtual & Augmented Reality, and Internet of Things (IoT)
- Commercialized many cloud software platforms, most notably [www.precisionreality.com](http://www.precisionreality.com)
- A Three-Time Recipient of the Intel Software Innovator of the Year award

## PRODUCTS & SERVICES

### SHIPBOARD DIMENSIONAL ANALYSIS TOOL (SDAT)

- SDAT is a software that performs dimensional analysis to determine fit into the Navy Fleet of ships
- Performed with laser scans of ships and 3D Models of vehicles through a method of voxelization
- Software performs path navigation through the ship and reports any collision points when loading or unloading a vehicle onto a Navy Ship, ultimately providing the transportability
- Integrates hardware, software and cloud solutions enabling virtual transportability assessments for vehicle designs
- Integrates 3D ship and vehicle data with game engine and machine learning technology
- Uses novel methods of rendering surfaces and computer processing to enable path selection, collision computation and analysis in 3D virtual environments
- Additional capabilities for measurements, notes and annotations and capture screenshots and animations in the 3D environment
- Topic #: N172-101 | Contract #: M67854-19-C-6506



### PRECISION REALITY

- Precision Reality is a digital twin platform offering network, software, hardware, systems integration, infrastructure design and installation services
- Precision Reality leverages emerging technologies to capture, manage, and visualize data from central location creating a digital twin with real-time data feeds and notifications
- A facility or location is captured with a laser scanner to build a digital 3D blueprint of the environment
- Sensors are installed on critical systems and assets including HVAC, coolers, doors, vehicles, etc. to automate data collection
- Data streams are connected to the digital blueprint to complete the virtual replica with real-time data feeds and alerts
- Digital twin technology allows for immediate response to critical issues, decreasing operational downtime and increasing productivity
- Analysis of usage data over time can be used to implement cost-saving, activity-based management
- The platform is scalable and flexible to accommodate business' growing needs.