

charles river analytics

Corporate Overview





*Employee-owned
small Business*



*Cambridge MA HQ,
started in 1983*

▪ *Second office in
Point Judith, RI*

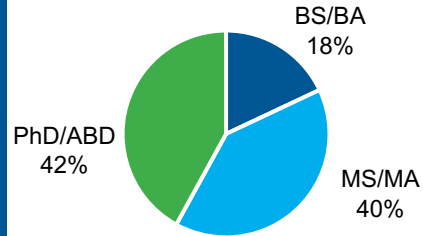


*180+ employees
and associates*

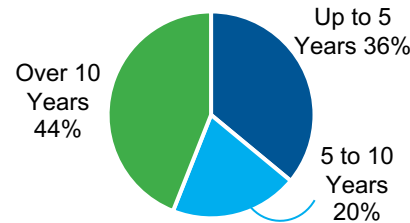


*TS-cleared
personnel
and facility*

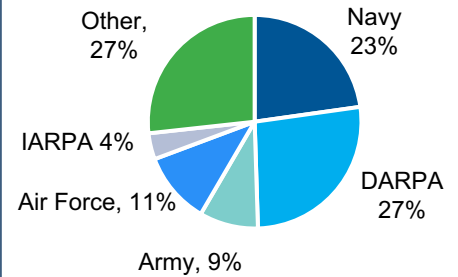
Research Staff Degrees



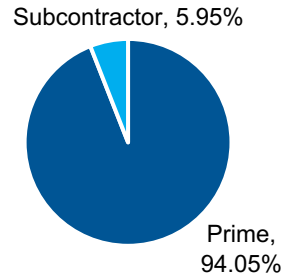
Software Developers Years of Experience



FY19 Contract Revenue by Agency

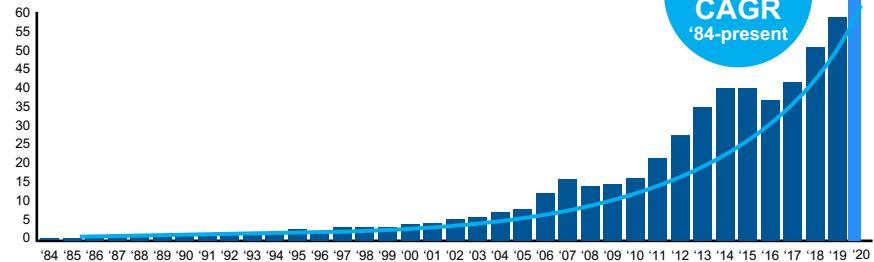


FY19 Revenue Breakdown

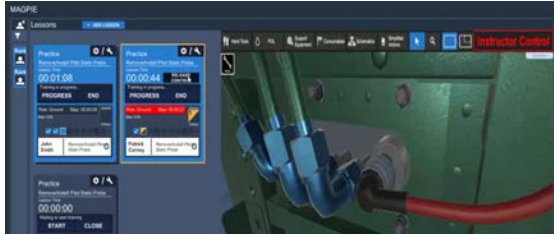


Revenue History

(\$ in millions)



**18%
CAGR
'84-present**



HCIS Human-Centered Intelligent Systems

- Intuitive interfaces and operator support tools for complex, AI-based systems
- Work analysis, design prototyping, and human-in-the-loop evaluation
- Skill modeling, adaptive intelligent training, VR game- and simulation-based training
- Cognitive models of human performance
- Information visualization



Decision Management

- Probabilistic modeling and inference to reason under uncertainty
- Planning and optimization for strategic and real-time decision-making/autonomy
- Data processing and analytics at-scale
- Natural language processing and generation
- Cybersecurity: threat/vulnerability analysis, cyber defense, cyber resilience
- Advanced AI/machine learning techniques



Sensing, Perception, and Applied Robotics

- Human-based neuro- and physiological sensing and analytics
- Automated analysis of imagery, full motion video (FMV), PNT and EW data
 - Analytics for EO/IR, sonar, radar/SAR, LiDAR, LDV sensor feeds
- Automatic target recognition (ATR) and tracking
- Air, sea, space, and ground-based robot navigation and autonomy
- Electromechanical hardware design and fabrication
- On-water testing services



Government Agency Customers

DoD (Primary)

- *Army* (ARL, AGC, CDCC)
- *Navy* (ONR, NAVAIR, NAVSEA, NAVWAR)
- *Air Force* (AFRL, AFOSR, AFLCMC, SMC)
- *Other* (DARPA, SOCOM, MDA, CTTSO)

IC

- IARPA
- NRO
- NSA

Other

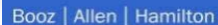
DHS, DOE, DOT,
NASA, NSF, NIH

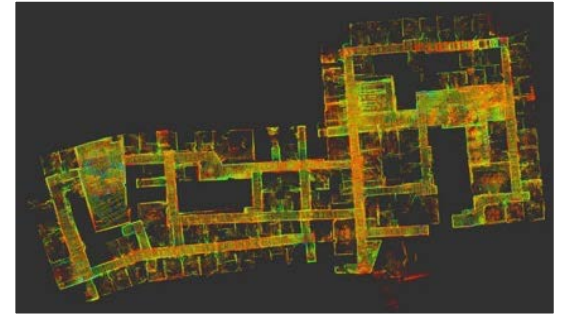


Commercial Customers and Opportunities



Synergy through Partnering





Charles River Analytics

625 Mount Auburn St.
Cambridge, MA 02138

p: 617.491.3474

f: 617.868.0780

www.cra.com