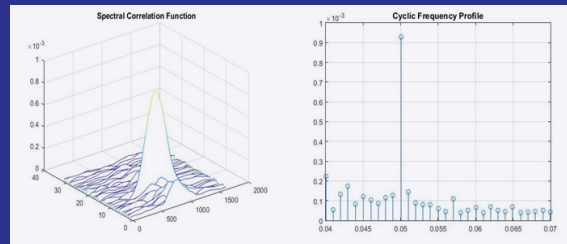
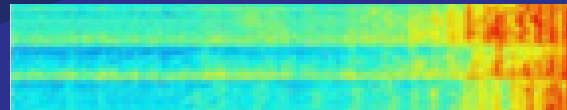
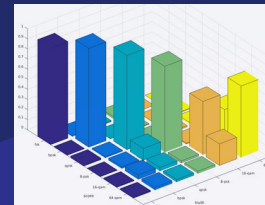
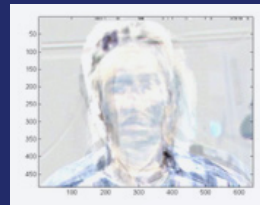
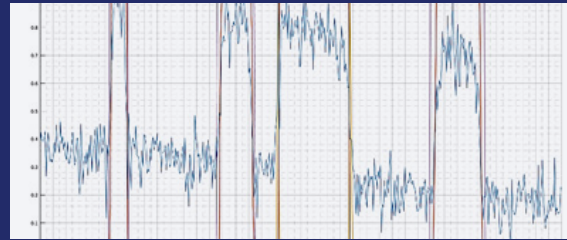


# EMBRACE THE *OFFBEAT* SYNCOPATED

COGNITIVE RADIO AND FOG ANALYTICS



## SYNCOATED ENGINEERING

Syncopated Engineering is a creative solution provider of software applications and embedded systems for wireless communications, signal processing, and data analytics. We deliver custom products and purpose-built solutions in the areas of software defined radio and hardware acceleration, enhanced with capability driven engineering services.

Our goal is to deliver creative and effective solutions to our customers most challenging problems. We employ an agile and disciplined development process that emphasizes customer communication, system usefulness and usability, and the flexibility to accommodate change at the pace of our customer's dynamic mission.

Syncopation is a creative disturbance of the regular rhythmic flow that accents the offbeat.

"Embrace the Offbeat" at Syncopated Engineering.

Go to [www.SyncopatedEngr.com](http://www.SyncopatedEngr.com) for more info.

### COGNITIVE RADIO

The wireless spectrum is a dynamic and harsh environment, and has become the new battle space for the military.

Our CIELO family of Software Defined Radio (SDR) products enables intelligent wireless applications capable of exploiting multiple "radio personalities" with the same radio platform.

Our Cognitive Radio, built on our CIELO software radio platform, includes a Cognitive Engine capable of autonomous learning and reconfiguration to adapt to dynamic spectral environments providing complete spectrum situational awareness and robust, anti-jam wireless communications for cyberspace operations.

### WIRELESS SECURITY

As the Internet-of-Things explodes, so does the wireless and highly mobile security threat.

Our CIELO software reconfigurable radio solutions and specialized machine learning algorithms, provide the ability to detect, characterize and locate anomalous wireless behavior like rogue WiFi access points or hidden wireless transmitters.

### FOG ANALYTICS

Our ALEGRE Fog Computing solutions provide hardware acceleration of analytics at the edge of the network, enabling our customers to get answers as the data is collected not hours later after it is transported to the cloud.

Our fog analytic solutions work seamlessly with the enterprise cloud solutions, enabling both global information awareness and distributed, local optimization providing analytic solutions for the Internet-of-Things.

Think Global and Act Local, with Fog Analytics from Syncopated Engineering.

## CIELO PRODUCT LINE

SOFTWARE DEFINED RADIO

The CIELO Software Defined Radio (SDR) product family includes portable and hand-held tactical systems and server/workstation based products for cognitive radio/radar applications, Direction Finding (DF), massive MIMO, and custom wireless security sensors.

SDR platforms include 2x2 MIMO Ethernet/USB and 4x4 MIMO PCIe devices. Systems include the FlexRadio cognitive wireless video Ethernet bridge, and DF processor for Adcock Antenna Arrays.

## ALEGRE PRODUCT LINE

HARDWARE ACCELERATED FOG ANALYTICS

The ALEGRE Hardware Acceleration product family is a portfolio of fog computing and analytic products that leverage heterogeneous computing architectures including FPGAs and GPUs to provide high performance analytics at the edge of the network.

Use cases include real-time fog analytics for IoT, wireless security, distributed anomaly detection, biometric and cyber data triage analytics.

## *INTERESTED?*

SYNCOPATED ENGINEERING INC.

[WWW.SYNCOPATEDENGR.COM](http://WWW.SYNCOPATEDENGR.COM)

[INFO@SYNCOPATEDENGR.COM](mailto:INFO@SYNCOPATEDENGR.COM)

