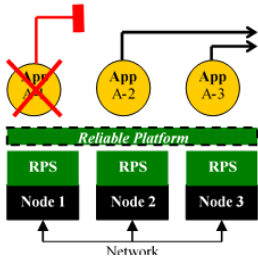


## Products

### System Resilience Manager

The **Reliable Platform Services (RPS)** middleware provides proven fault tolerance in complex systems. RPS is compliant with the FACE architecture.

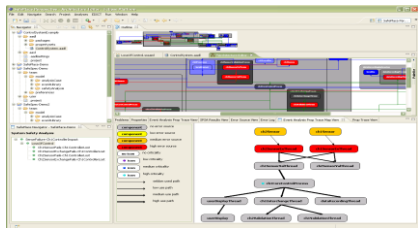


### Distributed Health Monitoring Service

The **Omni Health Monitor** detects faults in distributed systems via the network and triggers autonomous corrective actions or alerts in real-time.

### Model-Based Engineering Tools

The **EDICT® Tool Suite** is a versatile MBSE tool that supports modeling and analysis with open standards to enable integration into existing tool chains.



### Architecture Analysis for Legacy Code

The **Code Architecture Analysis** tool automatically generates models from existing code for analysis and to readily apply MBSE to legacy systems.

### Big Data Analysis

The **Big Data Architecture Analysis** tool automatically generates models from big data sets for analysis and to support MBSE with existing information.

## Contact Us

**Dr. Chris Walter**  
President

410-418-4353  
cwalter@wwtechnology.com

**Dr. Richard LeBoeuf, MBA, PMP**  
Product Development

254-485-7809  
rleboeuf@wwtechnology.com

### **WW Technology Group**

Ellicott City, Maryland  
410-928-7888  
www.wwtechnology.com  
linkedin.com/company/ww-technology-group-inc

### About the WW Technology Group

The WW Technology Group has provided services and tools for mission critical systems, including new and long-life platforms for over 25 years.

Our methodology and tools provide enhanced security, safety, dependability and performance to critical system areas for cost-effective sustainment and upgrade processes and increased efficiency of system certification.

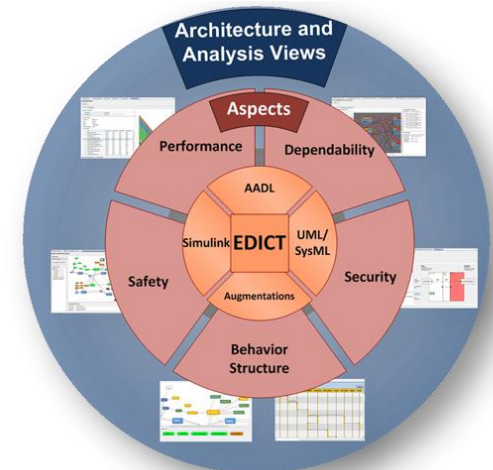
The upgraded Virginia-class submarine ship control system benefits from the ultra-dependability of our leading-edge fault-tolerant architecture. It will also be part of the new Columbia-class X-by-wire architecture.



**WW Technology Group**

*The Dependability Solution Provider™*

## Resilient Systems & Model-Based Engineering



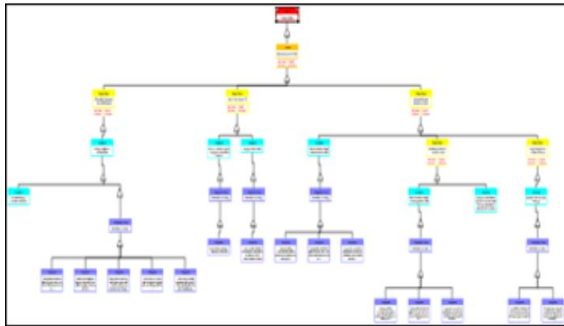
## Consulting

### Software Engineering and Analysis

- ✓ Software Design and Development
- ✓ Algorithm Development
- ✓ Code Analysis
- ✓ Security Analysis
- ✓ Safety Analysis
- ✓ Dependability Analysis

### Systems Engineering

- ✓ Requirements Engineering
- ✓ Architecture Design
- ✓ Decision Analysis
- ✓ Verification and Validation
- ✓ Certification
- ✓ Project Planning
- ✓ Risk Management
- ✓ Interface Management



### Research and Innovation

- ✓ Concept Development
- ✓ Feasibility Studies
- ✓ Innovation Management
- ✓ Program Management
- ✓ Project Management

### Independent Verification and Validation

- ✓ Systems
- ✓ Subsystems
- ✓ Software

## Research

The WW Technology Group is very active in advanced research with the U.S. Small Business Innovation Research (SBIR) program focusing on fault-tolerant systems and model-based systems engineering.

Our research includes:

- Phase II – Cost Effective Mixed Criticality Systems (Completes Q3-21)
- Phase II – AFMC/AFRL: Model Based Systems Engineering Big Data Analytics (Completes Q4-21)
- Phase II – NAVAIR: Fault Tolerant Decentralized Mission Processing (Completes Q1-20)
- Phase II.5 – NAVSEA: High Confidence Software and Automation in Submarine Systems (Completed Q1-21)

## Markets

- ✓ Embedded real-time control systems
- ✓ Adaptive distributed systems
- ✓ Autonomous systems
- ✓ Sensor webs
- ✓ Internet of Things (IoT)
- ✓ Avionics and combat systems
- ✓ Process improvement and affordability
- ✓ System upgrades and sustainment
- ✓ Command and control systems
- ✓ Telecommunications
- ✓ Medical devices
- ✓ Distributed computing platforms

## Customers

- |                     |                   |
|---------------------|-------------------|
| • NAVSEA            | • BAE Systems     |
| • NAVAIR            | • Boeing          |
| • AFRL              | • Honeywell       |
| • ARL               | • Northrup        |
| • DARPA             | • Grumman         |
| • NASA              | • L3 Systems      |
| • JPL               | • Lockheed Martin |
| • SRI International | • Bison Aerospace |

