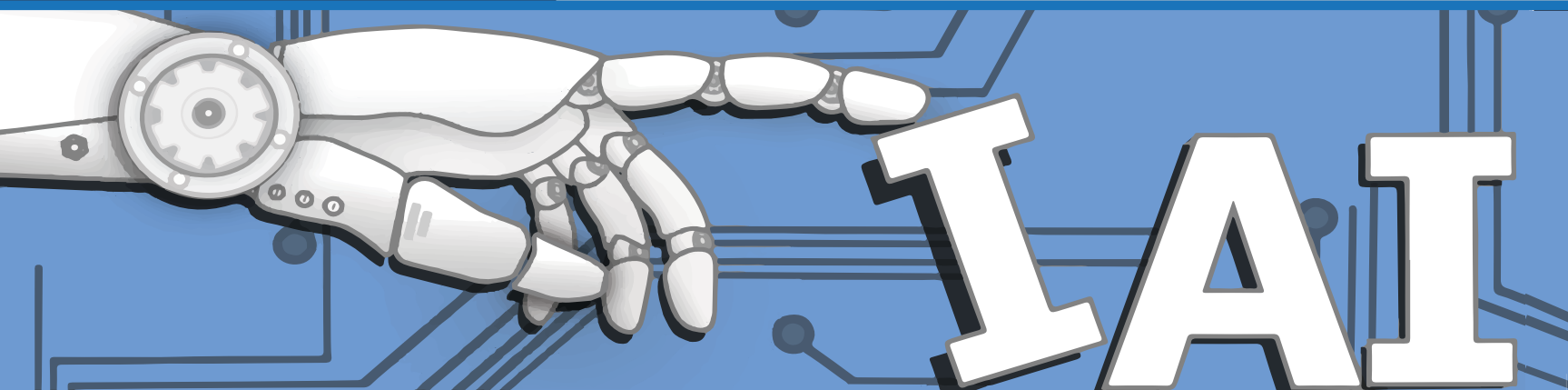


Intelligent Automation, Inc.

Corporate Overview



WHAT CAN WE INVENT FOR YOU?

Intelligent Automation, Inc. (IAI) is a technology innovation company specializing in providing advanced technology solutions and R&D services to federal agencies, and corporations. Our researchers and scientists pursue innovation across

a broad range of fields, and are always looking for new challenges. We will apply our R&D experience to your problem by leveraging our collection of products and knowledge cultivated from past and active research programs.

Core Capabilities



Electro Optics
Sensor Systems



Patient Health Data
Wearables



Big Data
Social Media Analytics



RF Design
RF Testing



Network Design
Cyber Security



Artificial Intelligence
Machine Learning



AR/VR Training
Assesments



Robotics
Automation



Aviation Data Analysis
Traffic Data Analysis



contact@i-a-i.com
www.i-a-i.com

Copyright © Intelligent Automation Inc. (IAI) All rights reserved. IAI retains ownership of all other rights to the material expressed in this document. Any reproduction of the content on this document without prior written permission from IAI is prohibited.

Recent Products



ARGUS™
Perimeter Security System



Intelligent Aviation Inspection™



RF Testing and Emulation™

About IAI

Founded in 1987, IAI is a woman-owned small business that solves challenging science and technology problems through a research institution inspired R&D process.

With the exploratory spirit of a university research lab and the practicality of a seasoned product development company, we push the boundaries of technology, creating the cutting edge every day.

The IAI team thrives on the pursuit of knowledge. More than 75% of IAI's technical staff hold advanced degrees. 50% hold Doctorates.

Program Transitions

Future Combat Systems
NAVEODTECHDIV AEODRS
Joint Service Small Arms
NASA Airspace Concept Evaluation
System
NASA ECOSAR
Joint Strike Fighter
Centers for Disease Control CIMS
NAVAIR Scalable Network Access Protocol

Awards

National Tibbetts Awards and
Administrator's Awards from SBA

Northrop Grumman
Supplier Excellence Award

Raytheon Supplier of the Year

NASA's Space Act Software
Release Award

IDIQ Contract Vehicles

Air Force: ACT

Army: TAOSS, D31, STES, CICERO

FAA: e-FAST, SE2020, SE2025
NASA: HHPC, BPA

Navy: Seaport-E, Medical Omnibus III,
PMA-281, NRL ITD SB

Our Clients and Partners



Advanced Transceiver Platforms

Modular RF Hardware For Massive MIMO and Radar Applications

Powered by
nextRF



IAI's Advanced Transceiver Platforms provide powerful building blocks for RF designers to implement next-gen RF systems such as radar, test systems, electronic warfare (EW), and phased-array antenna systems. These platforms integrate high-end processors such as Xilinx RF system on chip (RFSoc) to provide a small form factor software-defined transceiver.

Deployable

High performance hardware in deployable packages supports military communications, electronic warfare (EW), unmanned aircraft systems (UAS), and radar.

Synchronized

Transceivers are phase synchronized across multiple front-ends to support massive MIMO, phased-array, and 5G applications.

Single Module Complete SDR

Powerful RFSoc-based system provides complete SDR which supports massive MIMO and phased-array applications.

Interchangeable Processor and RF modules

In addition to single module system approach, customers can mix and match processors and RF modules to fit their needs.



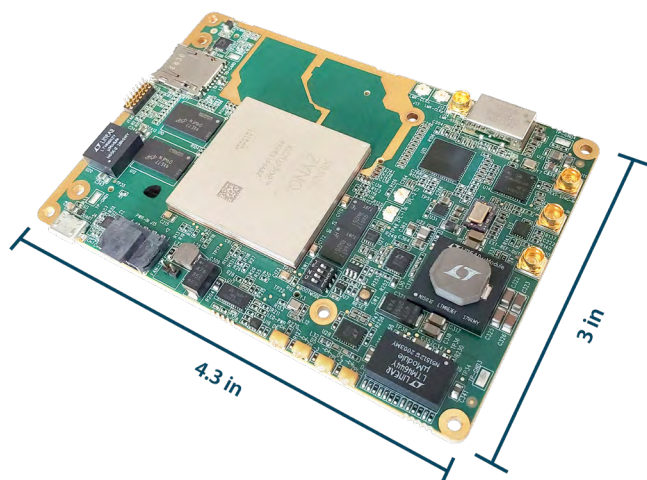
Single Module Complete Radio for Wideband MIMO



A product of Intelligent Automation, Inc.
The information contained is subject to change without notice.

Single Module Complete Radio

- Small Form-Factor (SFF) Transmit-Receive (Tx/Rx) Module
- Based on Xilinx RFSoc Gen-1 and Gen-3 technologies
- RF front-panel plugs directly into antenna panel or expansion RF front-ends (cabling optional)



PARAMETERS	SINGLE MODULE RADIO SPECIFICATIONS
Dimensions	4.3" x 4.3" x 0.8" (open frame, no enclosure) 4.8" x 4.5" x 2" (with fan-cooled metal enclosure)
RF Capability	Xilinx RFSoc Gen-1 Technology <ul style="list-style-type: none"> • 8-Ch Tx, 6.554 Gbps each, 4 GHz BW • 8-CH Rx, 4.096 Gbps each, 4 GHz BW
User Interfaces	Dual SFP+, Ext/Int Ref. Clock Input, User SD Card Slot, USB-UART, USB JTAG, Gigabit Ethernet, Debug and Status LEDs
RF Interfaces	<ul style="list-style-type: none"> • 8 x 8 Tx - Rx on High-Isolation Samtec Isorate connectors • Samtec LSHM for GPIO/Clock/Power
DC Power	12 V DC Typical

Compact Radio

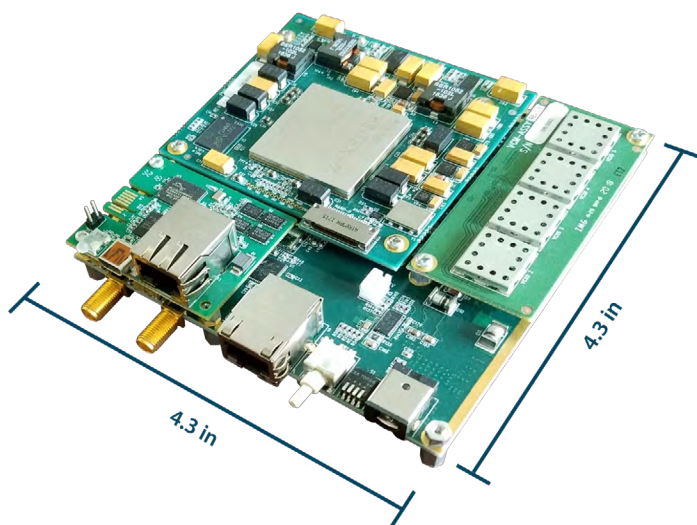
- Small Form-Factor SDR or Tx/Rx Module
- Modular Processor, Clocking, Configuration, and RF front-end options
- Supports industry standard FMC+ RF front-end options

Processor Module Options:

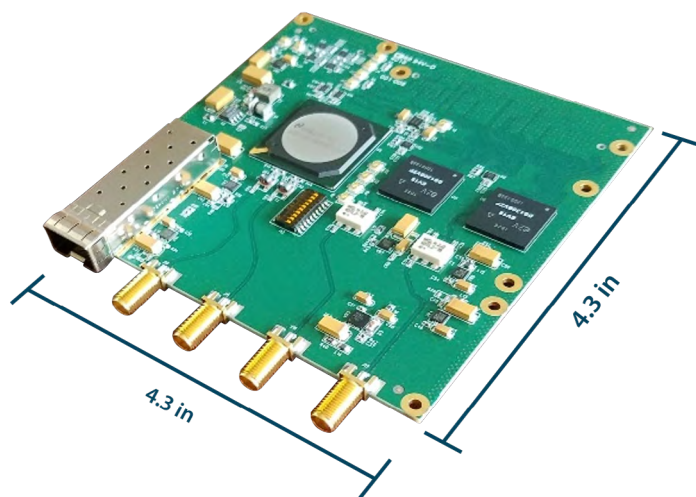
- Xilinx Kintex-7 FPGA
- Xilinx Kintex UltraScale FPGA

RF Front-end Options:

- Dual Tx and Rx, 1.5 Gbps/channel, 3 GHz BW
- Single Channel Tx and Rx, 3 Gbps, 3GHz BW



Complete Radio, Full stack



Single channel Tx-Rx, 3 Gbps RF front-end